



READY-TO-USE BEAD STORAGE AND RETRIEVAL SYSTEM FOR BACTERIAL CULTURES

The **CRY-O-BACT** system is ideal for storing culture collections for all laboratories using bacterial cultures. It is suitable for use in all areas including:

● **CLINICAL**
● **WATER**

● **BREWING**
● **FOOD**

● **PHARMACEUTICAL**
● **DAIRY**

● **BIOTECHNOLOGY**
● **RESEARCH**

PRINCIPLE OF PRESERVATION

EACH **CRY-O-BACT** TUBE SYSTEM CONTAINS 25 CHEMICALLY TREATED BEADS IN A SUPPLEMENTED CRYOGENIC SOLUTION. ONCE THE BEADS ARE INOCULATED, THE TUBES ARE STORED IN A FREEZER AT A TEMPERATURE BETWEEN -20°C AND -70°C . THE **CRY-O-BACT** METHOD OF STORAGE IS ECONOMICAL, SIMPLE, CONVENIENT AND IT REDUCES THE CHANCES OF ORGANISM VARIATION ASSOCIATED WITH REPEATED SUBCULTURING.

UNIQUE PLASTIC CRYOGENIC BOXES.



CRY-O-BACT TUBES CONTAIN A MEDIUM FOR SUSPENDING THE BACTERIAL CULTURE AND 25 TREATED BEADS

THE TUBES CONTAINING THE TREADED BEADS AND PRESERVING SOLUTION ARE SUPPLIED IN UNIQUE PLASTIC STORAGE CONTAINERS.

SPECIAL FEATURES

- 5 IDENTIFICATION COLOURS
- SILICON WASHER SCREW CAP
- 25 OR 100 TUBES PER PLASTIC BOX
- GRID IDENTIFICATION SYSTEM
- MARKING AREA
- EASY HANDLING LID ON THE BOX



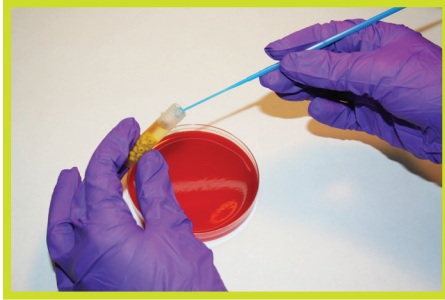
T.: 450.477.6789

www.nutri-bact.com

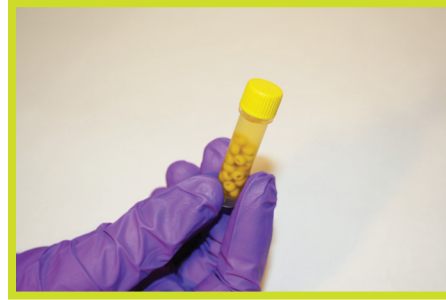
@: info@nutri-bact.com

2425 Édouard-Michelin, Terrebonne (QC) J6Y 4P2

PREPARATION FOR STORAGE



ASEPTICALLY INOCULATE THE **CRY-O-BACT** TUBE WITH COLONIES FROM A FRESH 18- HOUR PURE CULTURE OF BACTERIA. BE SURE TO MAKE A HEAVY CLOUDY SUSPENSION OF ORGANISM.



REPLACE THE CAPS AND MIX THE TUBES BY INVERTING THEM TO DISTRIBUTE THE BACTERIA IN THE SUSPENSION AND ALLOW THE BACTERIA TO COAT THE **CRY-O-BACT** BEADS.



USING A STERILE PIPET, REMOVE AS MUCH OF THE PRESERVING SOLUTIONS AS POSSIBLE AND CLOSE THE TUBE.

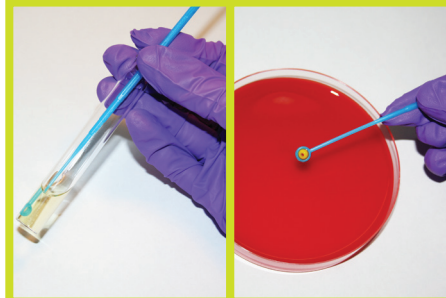


IMMEDIATELY PLACE THE **CRY-O-BACT** TUBE IN THE APPROPRIATE PLACE OF THE BOX AND STORE THE BOX IN A -20°C TO -70°C FREEZER TO PRESERVE THE CULTURE. RECORD THE TUBE CONTENTS USING THE GRID CO-ORDINATES ON THE BOX. OPTIONALLY, THE INOCULATED TUBE MAY BE STORED IN A LIQUID NITROGEN CONTAINER.

RECOVERY



TAKE OUT THE **CRY-O-BACT** TUBE FROM THE FREEZER OR LIQUID NITROGEN CONTAINER AND OPEN THE TUBE. USING STERILE FORCEPS OR A STERILE INOCULATING NEEDLE, RETRIEVE ONE BEAD FROM THE PRESERVING SOLUTION.



STREAK THE SURFACE OR ROLL THE BEAD OVER THE SURFACE OF A SOLID MEDIUM OF CHOICE AND INCUBATE. OPTIONALLY, THE BEAD MAY BE DROPPED INTO A NUTRIENT BROTH. RETURN THE **CRY-O-BACT** TUBE WITH DE REMAINING BEADS TO THE FREEZER OR LIQUID NITROGEN TO PREVENT THAWING OF THE OTHER BEADS.

ORDERING INFORMATION

CATALOG NO.

DESCRIPTION

25 TUBES

COB-25R
COB-25G
COB-25Y
COB-25B
COB-25W
COB-25M

100 TUBES

COB-100R
COB-100G
COB-100Y
COB-100B
COB-100W
COB-100M

RED BEADS
GREEN BEADS
YELLOWBEADS
BLUE BEADS
WHITE BEADS
MIXED BEADS